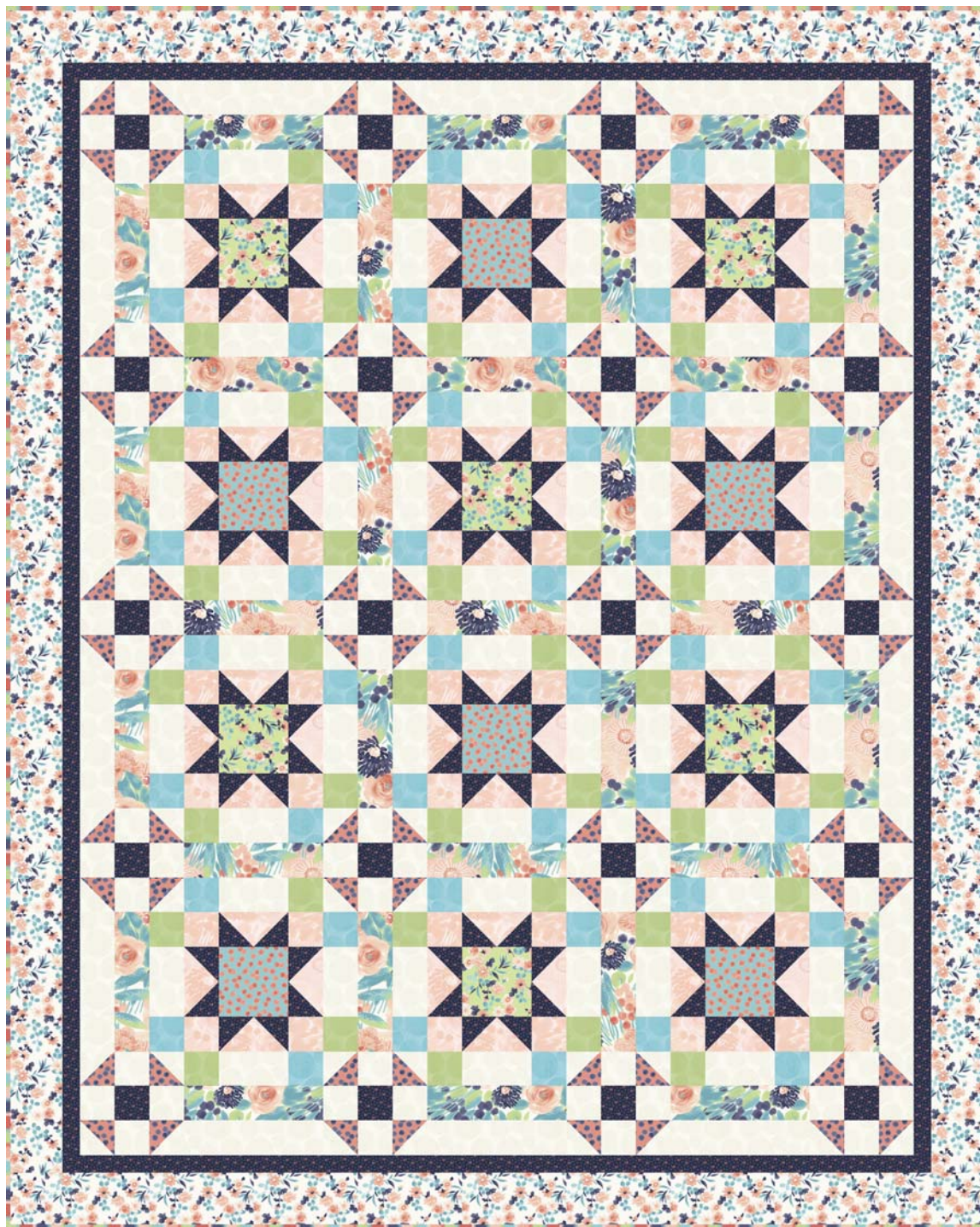


Blushing Dots

Fabric by Laura Berringer



56" x 70"

FABRIC REQUIREMENTS & CUTTING GUIDE

Quilt Size: 56" x 70"

Fabric A- Flowers – Lime **0769-0114** **1/4 yard**
Cut one 4 1/2" x width of fabric (WOF) strip. Sub-cut the strip into six 4 1/2" squares.

Fabric B- Ditsy Flowers – Navy **0771-0110** **1 yard**
Cut eight 2 1/2" x WOF strips. Sub-cut the strips into (116) 2 1/2" squares.
Cut four 1 1/2" x WOF strips. Sew the strips together end to end with diagonal seams and cut two 1 1/2" x 62 1/2" strips.
Cut three 1 1/2" x WOF strips. Sew the strips together end to end with diagonal seam and cut two 1 1/2" x 50 1/2" strips.

Fabric C- Tonal Flowers – Blush **0767-0130** **3/4 yard**
Cut six 2 1/2" x WOF strips. Sub-cut the strips into forty-eight 2 1/2" x 4 1/2" strips.
Cut three 2 1/2" x WOF strips. Sub-cut the strips into forty-eight 2 1/2" squares.

Fabric D- Color Bomb – Cream **0772-0142** **1 1/2 yards**
Cut three 2 7/8" x WOF strips. Sub-cut the strips into forty 2 7/8" squares.
Cut six 2 1/2" x WOF strips. Sub-cut the strips into forty-eight 2 1/2" x 4 1/2" strips.
Cut five 2 1/2" x WOF strips. Sub-cut the strips into eighty 2 1/2" squares.
Cut four 2 1/2" x WOF strips. Sub-cut fourteen 2 1/2" x 8 1/2" strips.

Fabric E- Color Bomb – Lime **0772-0114** **1/3 yard**
Cut three 2 1/2" x WOF strips. Sub-cut the strips into forty-eight 2 1/2" squares.

Fabric F- Color Bomb – Teal **0772-0120** **1/3 yard**
Cut three 2 1/2" x WOF strips. Sub-cut the strips into forty-eight 2 1/2" squares.

Fabric G- Dots – Coral **0770-0131** **3/8 yard**
Cut three 2 7/8" x WOF strips. Sub-cut the strips into forty 2 7/8" squares.

Fabric H- Main Floral – Multi **0767-0125** **2/3 yard**
Cut eight 2 1/2" x WOF strips. Sub-cut the strips into thirty-one 2 1/2" x 8 1/2" strips.

Fabric I- Flowers – Cream **0769-0146** **7/8 yard**
Cut four 3 1/2" x WOF strips. Sew the strips together end to end with diagonal seams and cut two 3 1/2" x 64 1/2" strips.
Cut three 3 1/2" x WOF strips. Sew the strips together end to end with diagonal seams and cut two 3 1/2" x 56 1/2" strips.

Fabric J- Stripe – Multi **0768-0126** **5/8 yard**
Cut seven 2 1/2" x WOF strips for the binding.

Fabric K- Dots – Teal **0770-0120** **1/4 yard**
Cut one 4 1/2" x WOF strip. Sub-cut the strip into six 4 1/2" squares.

Backing- Main Floral – Multi **0767-0125** **3 3/4 yards**
Cut two 64" x WOF strips. Sew together and trim to make one 64" x 78" back.

continued

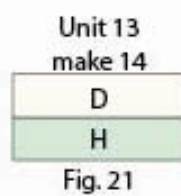
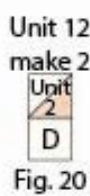
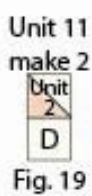
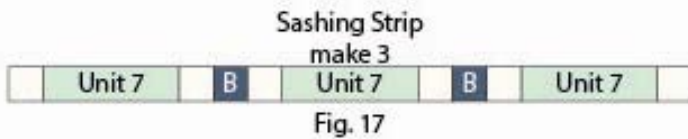
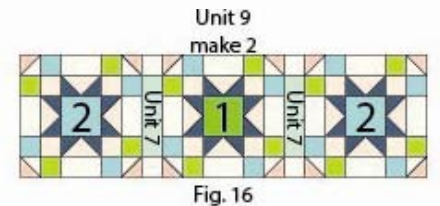
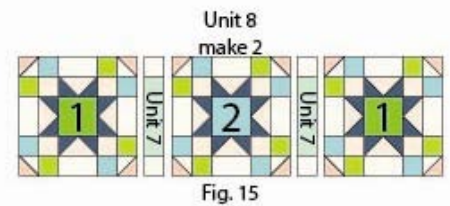
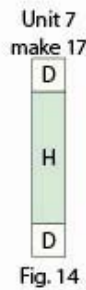
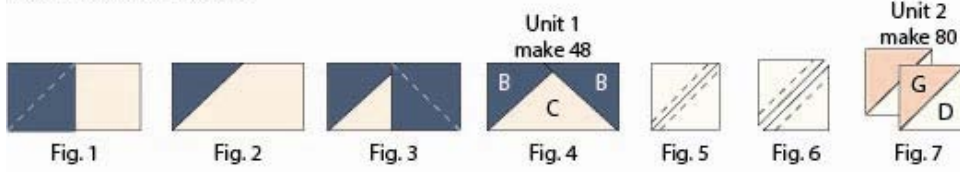
Block Assembly**(Pay attention to the orientation of the units when making the blocks.)**

See Figs 1-22 on Page 4

1. Place one 2 ½" Fabric B square on the left side of one 2 ½" x 4 ½" Fabric C strip, right sides together (Fig. 1). Sew across the diagonal of the square from the upper right corner to the lower left corner (Fig. 1). Flip open the triangle formed and press (Fig. 2). Trim away the excess fabric from behind the triangle, leaving a ¼" seam allowance.
2. Place another 2 ½" Fabric B square on the right side of the 2 ½" x 4 ½" Fabric C strip, right sides together (Fig. 3). Sew across the diagonal of the square from the upper left corner to the lower right corner (Fig. 3). Flip open the triangle formed and press. Trim away the excess fabric from behind the triangle, leaving a ¼" seam allowance to make one Unit 1 strip (Fig. 4).
3. Repeat Steps 1-2 to make forty-eight Unit 1 strips total.
4. Place one 2 7/8" Fabric D square on top of one 2 7/8" Fabric G square, right sides together. Draw a line across the diagonal of the top square (Fig. 5). Sew ¼" away from each side of the drawn diagonal line (Fig. 5). Cut the two squares apart on the drawn diagonal line (Fig. 6) to make two half-square triangles. Trim the blocks to measure 2 ½" square to make two Unit 2 squares (Fig. 7). Repeat to make eighty Unit 2 squares total.
5. Sew one 2 ½" Fabric C square to each end of one Unit 1 strip to make the top row. Repeat to make the bottom row. Sew one Unit 1 strip to each side of one 4 ½" Fabric A square to make the middle row. Sew the three rows together to make one Unit 3 square (Fig. 8). Repeat to make six Unit 3 squares total.
6. Sew one 2 ½" Fabric C square to each end of one Unit 1 strip to make the top row. Repeat to make the bottom row. Sew one Unit 1 strip to each side of one 4 ½" Fabric K square to make the middle row. Sew the three rows together to make one Unit 4 square (Fig. 9). Repeat to make six Unit 4 squares total.
7. Sew one 2 ½" Fabric F square, one 2 ½" x 4 ½" Fabric D strip and one 2 ½" Fabric E square together end to end and in that order to make one Unit 5 strip (Fig. 10). Repeat to make forty-eight Unit 5 strips.
8. Sew one Unit 2 square to each end of one Unit 5 strip to make one Unit 6 strip (Fig. 11). Repeat to make twenty-four Unit 6 strips total.
9. Sew one Unit 5 strip to each side of one Unit 3 square. Sew one Unit 6 strip to the top and to the bottom of the Unit 3 square to make one Block One square (Fig. 12). Repeat to make six Block One squares total.
10. Sew one Unit 5 strip to each side of one Unit 4 square. Sew one Unit 6 strip to the top and to the bottom of the Unit 4 square to make one Block Two square (Fig. 13). Repeat to make six Block Two squares total.
11. Sew one 2 ½" Fabric D square to the top and to the bottom of one 2 ½" x 8 ½" Fabric H strip to make one Unit 7 strip (Fig. 14). Repeat to make seventeen Unit 7 strips total.
12. Sew one Unit 7 strip to each side of one Block Two square. Sew one Block One square to each end of the newly sewn strip to make one Unit 8 strip (Fig. 15). Repeat to make a second Unit 8 strip.
13. Sew one Unit 7 strip to each side of one Block One square. Sew one Block Two square to each end of the newly sewn strip to make one Unit 9 strip (Fig. 16). Repeat to make a second Unit 9 strip.
14. Sew three Unit 7 strips and two 2 ½" Fabric B squares together end to end and alternating them to make one Sashing Strip (Fig. 17). Repeat to make three Sashing Strips total.
15. Sew one Unit 2 square to each side of one 2 ½" Fabric D square to make the top row. Sew one 2 ½" Fabric D square to each side of one 2 ½" Fabric B square to make the bottom row. Sew the two rows together lengthwise to make one Unit 10 strip (Fig. 18). Repeat to make fourteen Unit 10 strips total.
16. Paying attention to the orientation, sew one Unit 2 square to the top of one 2 ½" Fabric D square to make one Unit 11 strip (Fig. 19). Repeat to make a second Unit 11 strip.
17. Paying attention to the orientation, sew one Unit 2 square to the top of one 2 ½" Fabric D square to make one Unit 12 strip (Fig. 20). Repeat to make a second Unit 12 strip.
18. Sew one 2 ½" x 8 ½" Fabric D strip to the top of one 2 ½" x 8 ½" Fabric H strip lengthwise to make one Unit 13 strip (Fig. 21). Repeat to make fourteen Unit 13 strips total.
19. Sew four Unit 13 strips and three Unit 10 strips together end to end and alternating them. Sew one Unit 12 strip to the top of the newly sewn strip and one Unit 11 strip to the bottom to make one Side Border (Fig. 22). Repeat to make a second Side Border.
20. Sew four Unit 10 strips and three Unit 13 strips together end to end and alternating them to make the Top Border (Fig. 23). Repeat to make the Bottom Border.

continued

Blushing Dots Illustrations



Quilt Assembly (refer to the quilt layout while assembling the quilt top)

21. Sew (1) Unit 8 strip, one Sashing Strip, one Unit 9 strip, one Sashing Strip, one Unit 8 strip, one Sashing Strip and one Unit 9 strip together lengthwise and alternating them to make the Center Block.
22. Sew the Side, Top and Bottom Borders to the Center Block.
23. Sew one 1 ½" x 62 ½" Fabric B strip to each side of the Center Block. Sew one 1 ½" x 50 ½" Fabric B strip to the top and to the bottom of the Center Block.
24. Sew one 3 ½" x 64 ½" Fabric I strip to each side of the Center Block. Sew one 3 ½" x 56 ½" Fabric I strip to the top and to the bottom of the Center Block to make the quilt top.
25. Layer and quilt as desired.
26. Sew the seven 2 ½" x WOF Fabric J strips together, end to end with 45° seams, to make the binding. Fold this long strip in half, lengthwise with wrong sides together, and press.
27. Bind as desired.

Quilt Layout