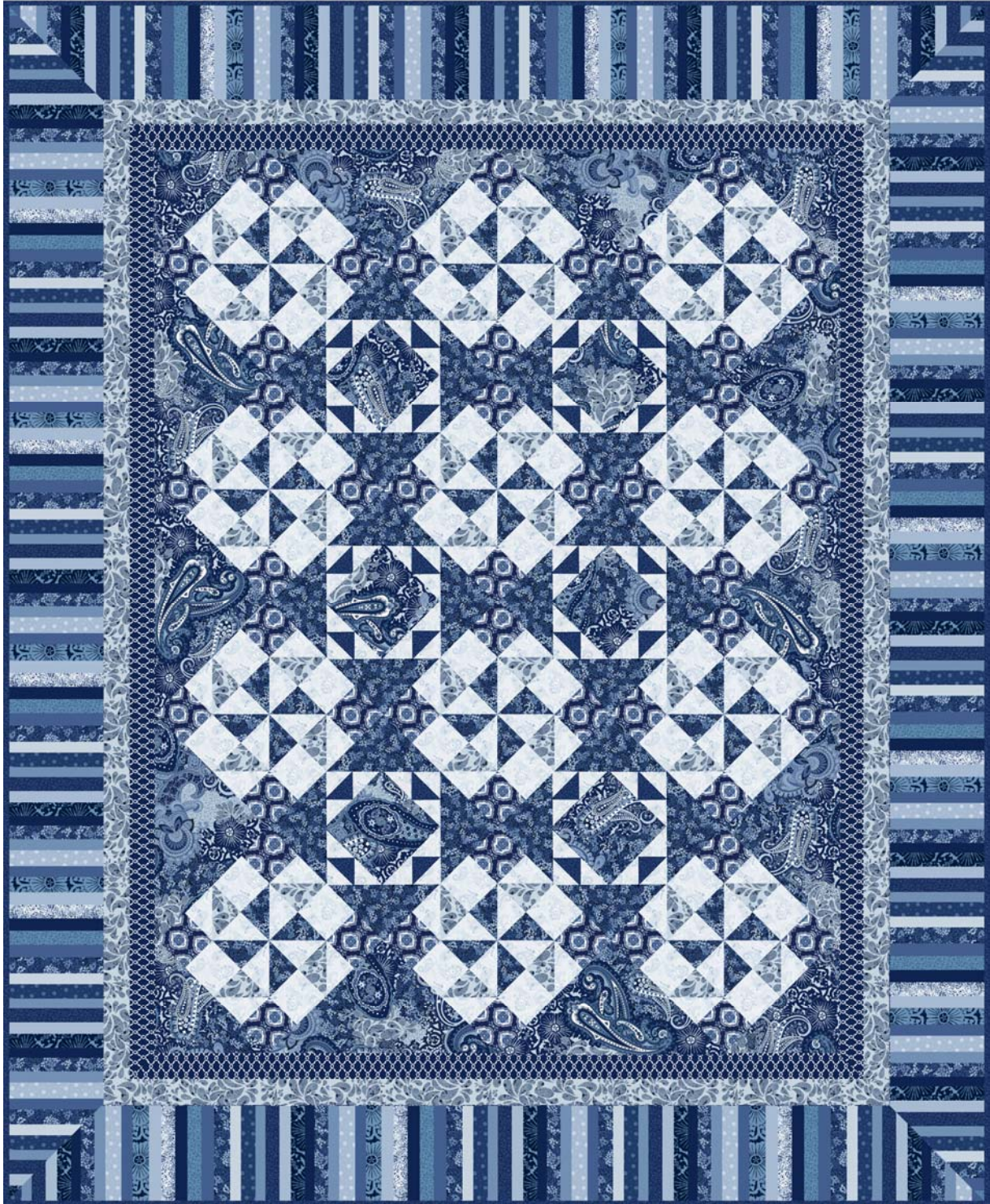


Blue Storm

Fabric by Laura Berringer



73" x 90"

Fabric	Yardage	Description
--------	---------	-------------

WOF designates width of fabric

Fabric A 7934-0118 1-1/2 yards Large paisley

Fussy-cut (6) 6-1/2" squares for Block B

Cut (2) strips, 18-1/4" x WOF, from these strips cut:

(3) 18-1/4" squares, then cut each square in half on diagonal twice to yield (12) side setting triangles

From remainder cut (2) 9-3/8" squares, cut these in half on diagonal once to yield (4) corner setting triangles

Fabric B 7935-0122 1 yard Swirling leaves

Cut (7) strips, 2-1/2" x WOF strips for border #2; join strips end to end and cut:

(2) 2-1/2" x 72-1/2" vertical borders

(2) 2-1/2" x 59-1/2" horizontal borders

Cut (3) 3-7/8" x WOF strips, recut into (24) 3-7/8" squares, then cut each square in half on the diagonal once to yield (48) triangles for Block A

Fabric C 7936-0118 5/8 yard Medallions

Cut (4) strips, 3-1/2" x WOF strips, from these strips cut:

(48) 3-1/2" squares for Block A

Fabric D 7937-0118 2 yards Stripe

Cut (9) 7-1/2" x WOF strips for border #3; join strips end to end and cut:

(2) 7-1/2" x 94" vertical borders and (2) 7-1/2" x 77" horizontal borders

Fabric E 7939-0118 5/8 yard Lattice

Cut (7) strips, 2-1/2" x WOF for border #1; join strips end to end and cut:

(2) 2-1/2" x 59" horizontal borders

(2) 2-1/2" x 72" vertical borders

Fabric F 7940-0118 7/8 yard Small floral

Cut (3) strips, 3-7/8" x WOF for Block A, from these strips cut:

(24) 3-7/8" squares, then cut squares in half on diagonal once for (48) triangles

Cut (2) strips 6-7/8" x WOF strips for Block B, from these strips cut:

(12) 6-7/8" squares, then cut squares in half on diagonal once for (24) triangles

Fabric G 7941-0122 1-1/3 yards Small paisley

Cut (4) strips, 3-1/2" x WOF for Block A; from these strips cut:

(48) 3-1/2" squares

Cut (5) strips 3-7/8" x WOF for Block A; from these strips cut:

(48) 3-7/8" squares, then cut squares in half on diagonal once for (96) triangles

Cut (2) strips 4-1/4" x WOF for Block B; from these strips cut:

(18) 4-1/4" squares, then cut squares in half on diagonal twice for (72) triangles

Fabric H 7942-0118 3/4 yard Small dark blue vine

Cut (1) strip, 4-1/4" x WOF for Block B; from these strips cut:

(6) 4-1/4" squares, then cut squares in half on diagonal twice for (24) triangles

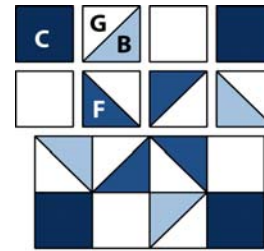
Cut (9) 2-1/4" x WOF strips for binding, sew together end-to-end

Fabric I 7938-0118 5-1/2 yards Backing

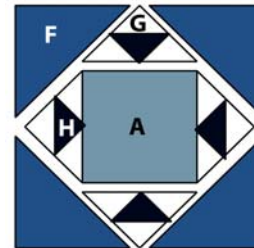
Block Assembly

Block A: Referring to the block diagram sew a fabric G triangle to a fabric B triangle. Make 4 units. Sew a fabric F triangle to a fabric G triangle. Make 4 units. Join the fabric C and fabric G squares with the triangle units to make a block. Press seams as you sew. Make 12 blocks.

Block B: Referring to the block diagram, sew a fabric G triangle to a fabric H triangle, then sew a fabric G triangle to opposite dark sides of the G/H unit to complete a pieced triangle unit. Make 4 units. Sew these units to each side of a fabric A square. Sew a fabric F triangle to each side of the block center to complete the block. Press seams as you sew. Make 6 blocks.



Block A



Block B

Quilt Assembly

The quilt is sewn together with blocks and side setting triangles in diagonal rows with two large corner units that are squared off using fabric A corner triangles. Refer to the Quilt Assembly diagram to make the rows and corner units. Sew the rows together to complete the center section of the quilt top. Press seams as you sew.

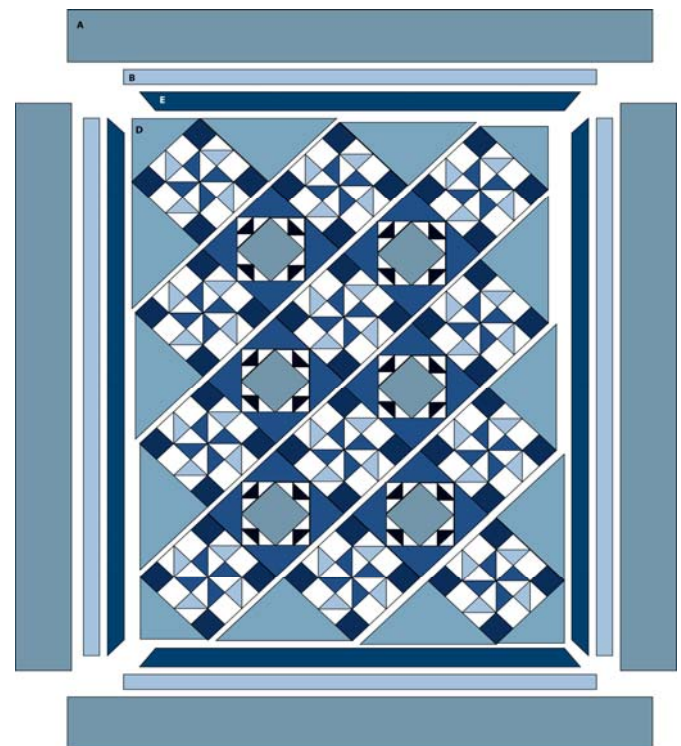
Center and sew the fabric E vertical borders to opposite sides of the quilt top with an equal amount of overlap on each end. Repeat with the fabric E horizontal borders on the top and bottom of the quilt top. Press seams toward borders. Miter corners, trim seam allowances to 1/4" and press seams open.

Sew the fabric B vertical borders to opposite sides of the quilt top and the fabric B horizontal borders to the top and bottom of the quilt top. Press seams toward borders. Sew the fabric D borders to the sides and top and bottom of the quilt top. Miter corners in the same manner as the borders in step 4, matching stripes in fabric at miters. Press seams toward borders.

Finishing

Cut the backing fabric into 2 equal pieces. Sew together selvedge to selvedge. Layer quilt top, batting and backing. Quilt layers together; trim edges even when quilting is complete.

Join the binding together end-to-end, fold in half lengthwise with wrong sides together and press the fold line. Bind the outside edges to complete the quilt.



Quilt Assembly