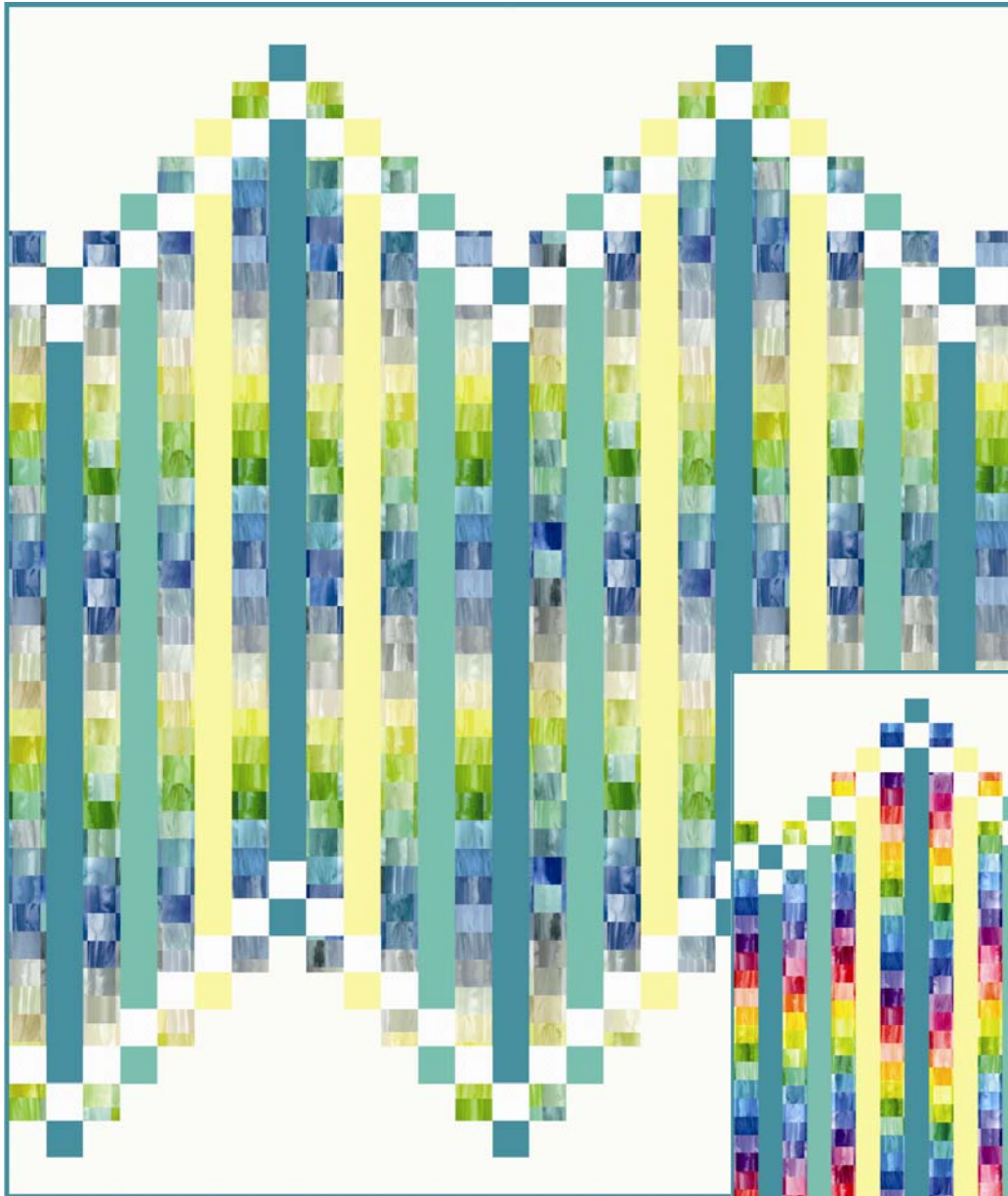


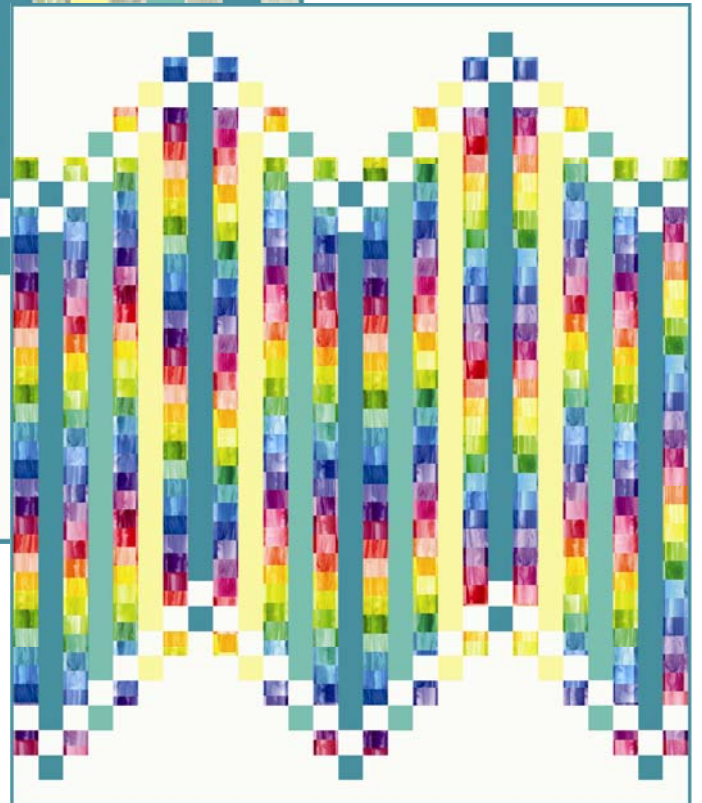
# Color Mood

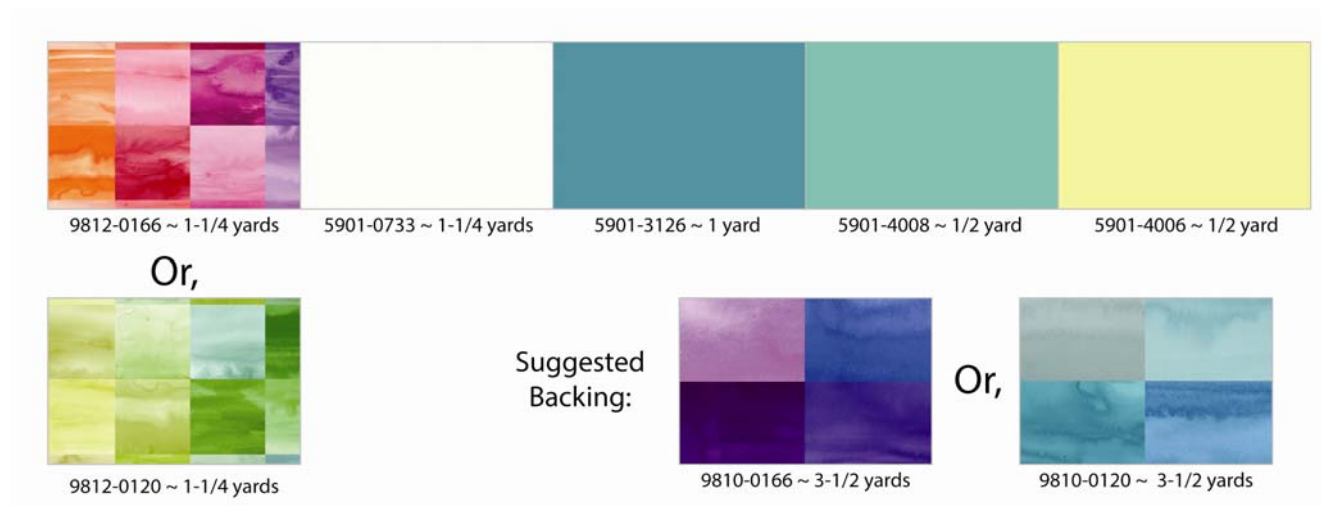
Fabric by Laura Berringer

*"Contempo —Brights" Quilt*



54 1/2" x 64 1/2"



**FABRIC REQUIREMENTS AND CUTTING GUIDE:**

Finished Size: 54 1/2" x 64 1/2"

**FABRIC REQUIREMENTS AND CUTTING GUIDE:****From the Rainbow – 1 1/4 yards (9821-0120 or 9812-0166)**

Cut 14 strips, 2 1/2" x 40 1/2"  
 Cut 28 squares, 2 1/2" x 2 1/2"

**From the solid Marshmallow – 1 1/4 yards (0733)**

Cut 16 strips, 2 1/2" x width of fabric; from these strips sub-cut 5 rectangles, 2 1/2" x 14 1/2"; 10 rectangles, 2 1/2" x 12 1/2"; 8 rectangles, 2 1/2" x 10 1/2"; 8 rectangles, 2 1/2" x 8 1/2"; 8 rectangles, 2 1/2" x 6 1/2"; 10 rectangles, 2 1/2" x 4 1/2"; and, 59 squares, 2 1/2" x 2 1/2"

**From the solid Lagoon – 1 yard (3126)**

Cut 5 strips, 2 1/2" x 40 1/2"  
 Cut 10 squares, 2 1/2" x 2 1/2"  
 Cut 7 strips, 2 1/4" x width of fabric; stitch these strips together end-to-end for binding; press seams open

**From the solid Aqua – 1/2 yard (4008)**

Cut 4 strips, 2 1/2" x 40 1/2"  
 Cut 8 squares, 2 1/2" x 2 1/2"

**From the solid Lemonade – 1/2 yard (4006)**

Cut 4 strips, 2 1/2" x 40 1/2"  
 Cut 8 squares, 2 1/2" x 2 1/2"

*All seams are sewn right sides together with a 1/4" seam allowance unless otherwise specified.)*

***Making the Vertical Strips***

1. Stitch a 2 1/2" Marshmallow square to each end of a 2 1/2" x 40 1/2" Rainbow strip, pressing to the Rainbow. Stitch a 2 1/2" Rainbow square to each end of the strip. Stitch a 2 1/2" x 12 1/2" solid Marshmallow rectangle to one end, followed by a 2 1/2" x 4 1/2" solid Marshmallow rectangle on the opposite as shown. Make 10.



continued

2. Repeat step 1 stitching a 2 ½" x 8 ½" Marshmallow to each end. Make 4.



3. Stitch a 2 ½" Marshmallow square to each end of a 2 ½" x 40 ½" solid Lagoon strip, pressing to the Lagoon. Stitch a 2 ½" solid Lagoon square to each end. Stitch a 2 ½" x 14 ½" Marshmallow rectangle to one end, followed by a 2 ½" x 2 ½" Marshmallow square to the opposite end. Make 5.



4. Repeat step 3 with a 2 ½" x 40 ½" solid Aqua rectangle, 2 of the 2 ½" Marshmallow squares, 2 of the 2 ½" solid Aqua squares, and a 2 ½" x 10 ½" and 2 ½" x 6 ½" Marshmallow rectangle. Make 4.

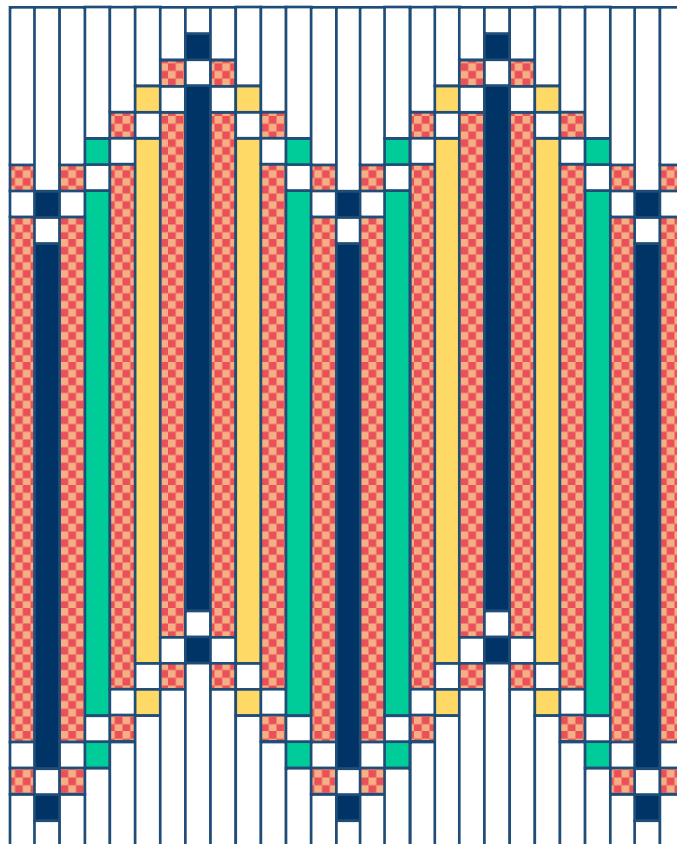


5. Repeat step 4 with a 2 ½" x 40 ½" solid Lemonade strip, 2 of the 2 ½" Marshmallow squares, 2 of the 2 ½" solid Lemonade squares, and a 2 ½" x 10 ½" and 2 ½" x 6 ½" Marshmallow rectangle. Make 4



### Assembly & Finishing:

6. Stitch the vertical strip units together as shown, noting the orientation of each strip. Press towards the Rainbow strip units.



7. Quilt as desired and bind with the solid Lagoon binding strip.