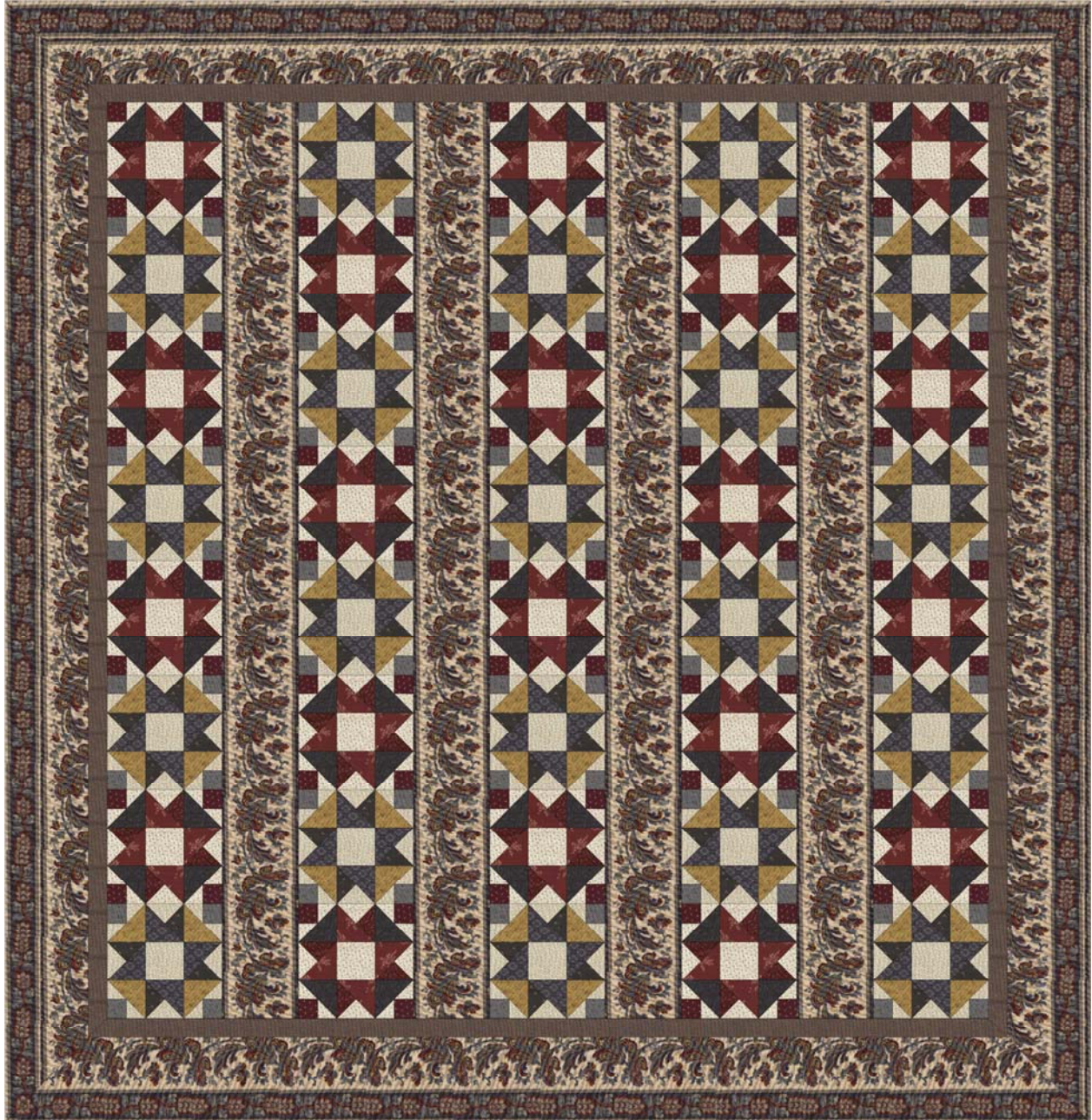


Basics, Borders & Backgrounds

Fabric by Molly B's Studio

Quilt by Molly B's Studio



The quilt features 40 total blocks in a vertical strippy set. The blocks are a nine patch star variation in two colorways. Blocks are 9" finished, 9 1/2" unfinished.

Fabric Requirements:

Inner Border: 4649-0191 3 /4 yard
 Outer Border and strips: 4814-0114 5 yards
 Binding and blocks: 4636-0144 1 ½ yards
 Blocks:
 4642-0129 ½ yard
 4635-0140 1 yard
 4648-0129 5/8 yard
 4652-0129 ¾ yard
 4637-0144 ½ yard
 4644-0140 1 yard
 4651-0113 ¾ yard
 4647-0144 5/8 yard
 4640-0144 ¾ yard
 Backing: 7 ¾ yards

Block 1 fabrics:



Fabric A

4642-0129



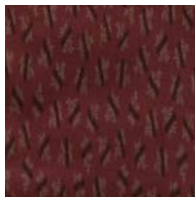
Fabric B, C & G

4635-0140



Fabric D

4636-0144



Fabric E

4648-0129



Fabric F

4652-0129

Cutting for Block 1:

Fabric	Quantity	Size	Subcut	Yield
A	80	2" x 2" squares	None	80 squares
B	80	2 3/8" x 2 3/8" squares	Cut in half on the diagonal*	160 triangles
C	20	4 1/4" x 4 1/4" squares	Cut in half on both diagonals**	80 triangles

D	40	3 7/8" x 3 7/8" squares	Cut in half on the diagonal	80 triangles
E	20	4 1/4" x 4 1/4" squares	Cut in half on both diagonals	80 triangles
F	40	3 7/8" x 3 7/8" squares	Cut in half on the diagonal	80 triangles
G	20	3 1/2" x 3 1/2" square	None	20 squares



*Cut in half on the diagonal means to cut from one corner to the opposite corner of the square, forming two triangles.



** Cut in half on both diagonals means to cut the square in half on both diagonals as shown, forming four triangles.

Block 1: Make 20 blocks in this color combination:

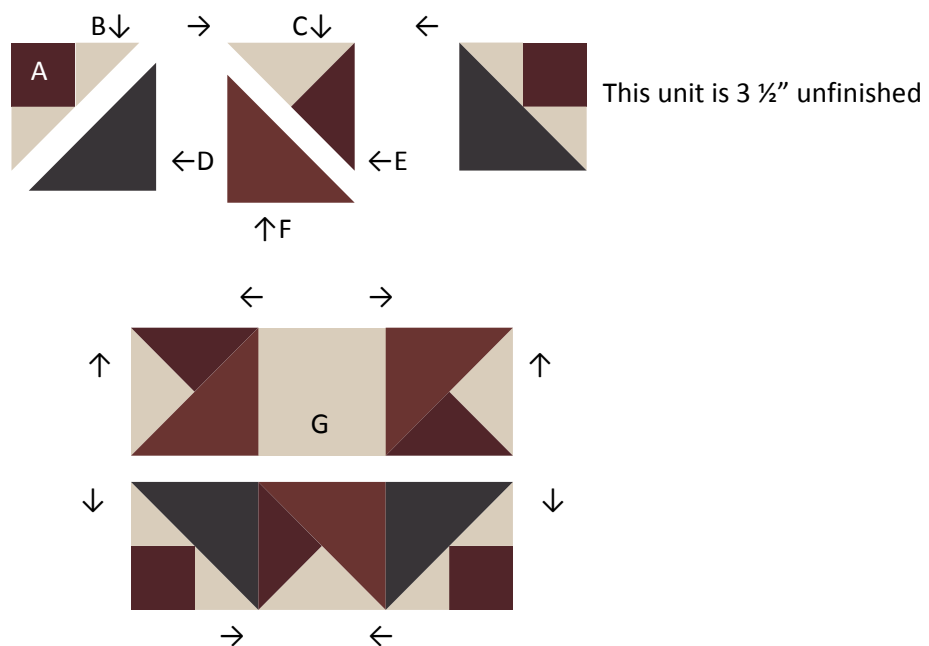


Make 80



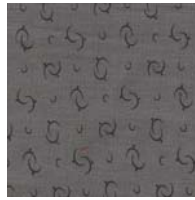
Make 80

Sew units together as indicated below to make 20 blocks. Press in direction of arrows



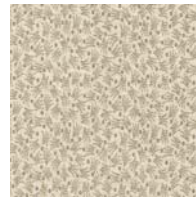
The block should measure 9 1/2" unfinished.

Block 2 fabrics:



Fabric A

4637-0144



Fabric B, C & G

4644-0140



Fabric D

4651-0113



Fabric E

4647-0144



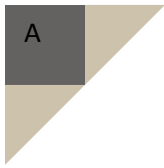
Fabric F

4640-0144

Cutting for Block 2:

Fabric	Quantity	Size	Subcut	Yield
A	80	2" x 2" squares	None	80 squares
B	80	2 3/8" x 2 3/8" squares	Cut in half on the diagonal*	160 triangles
C	20	4 1/4" x 4 1/4" squares	Cut in half on both diagonals**	80 triangles
D	40	3 7/8" x 3 7/8" squares	Cut in half on the diagonal	80 triangles
E	20	4 1/4" x 4 1/4" squares	Cut in half on both diagonals	80 triangles
F	40	3 7/8" x 3 7/8" squares	Cut in half on the diagonal	80 triangles
G	20	3 1/2" x 3 1/2" square	None	20 squares

Block 2: Make 20 blocks in this color combination

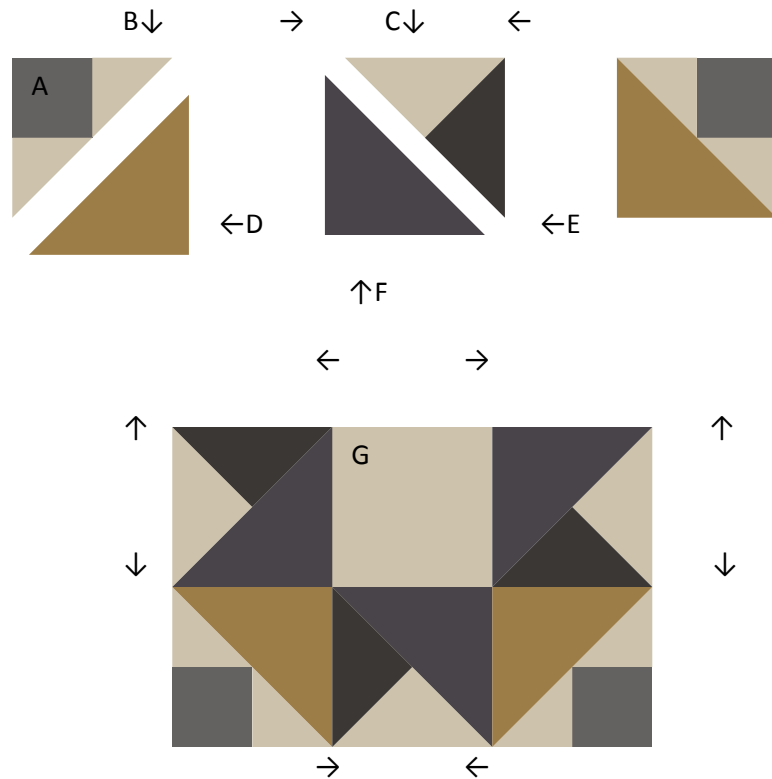


Make 80



Make 80

Sew units together as indicated below to make 20 blocks. Press in direction of arrows



The block should measure 9 1/2" unfinished.

Assembling the quilt:

From the large stripe, 4814-0110, cut four strips of fabric, centering the floral motif as shown. The strips should be 6 1/2" x 72 1/2".

Piece 8 of the blocks in a vertical row, starting with a red block one and then alternating a blue block 2. Repeat to make a total of three vertical strips that start with a red block. Then, piece two vertical strips that begin with a blue block and alternate with a red block.

The interior of the quilt will look like this:



We used mitered borders for this quilt to maximize the impact of the stripe. There are numerous online articles and tutorials about how to miter borders if you are unsure of the steps.

From the inner border fabric, cut 2" strips from Inner Border fabric 4649-0191. Make four strips for the inner border by piecing together enough strips to provide adequate length to miter the border, approximately 2" x 80". Attach the inner border.

From the outer border fabric, cut four 7" strips from the stripe fabric 4814-0114, centering the motif for each stripe. To allow for mitering, these strips need to be approximately 7" x 100". Attach the outer border.

Quilt as desired and bind with 2 ½" cut strips of 4636-0144.