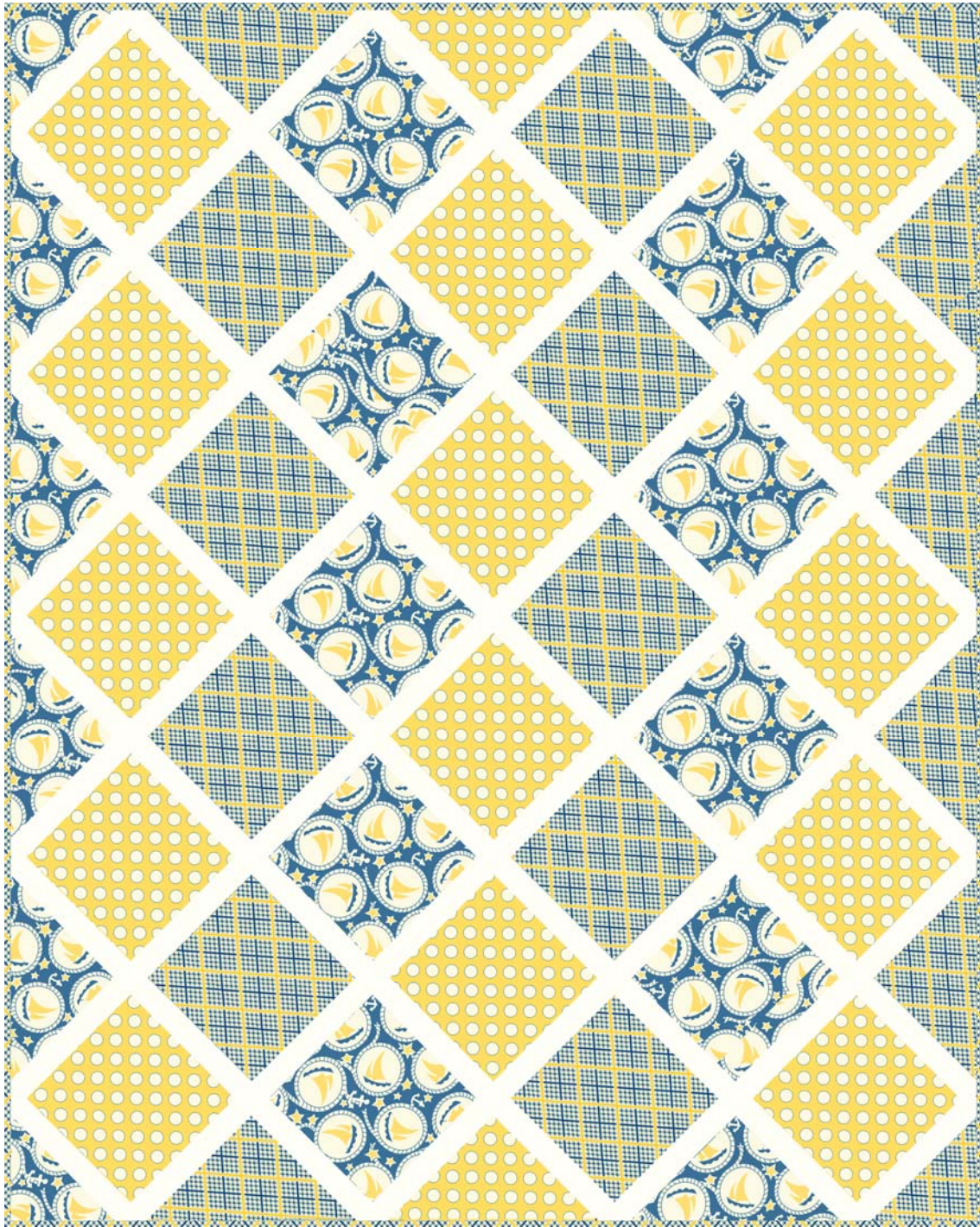


Aunt Grace Ties One On

Fabric by Judie Rothermel
Quilt by Heidi Pridemore



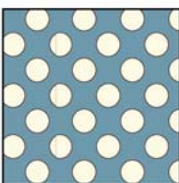
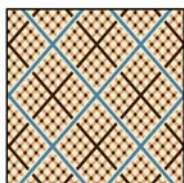
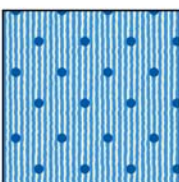
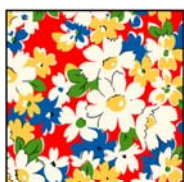
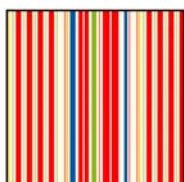
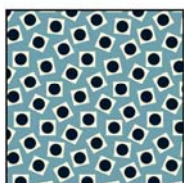
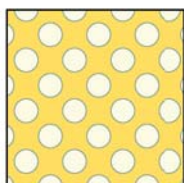
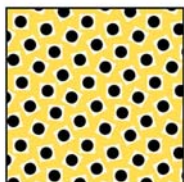
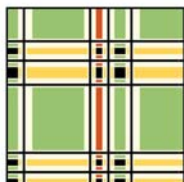
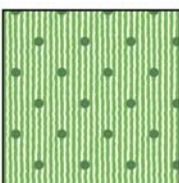
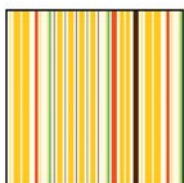
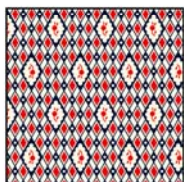
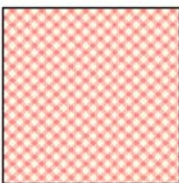
Designed for various 3-fabric combinations — See Page 2

A

B

C

D - sashing



FABRIC REQUIREMENTS & CUTTING GUIDE

Quilt Size 39½" x 49½"

Fabric A Group 1 Group 2 Group 3 Group 4 2/3 yard
 5373-0127 5367-0177 5364-0130 5376-0144
 Cut three 6 ½" x width of fabric (WOF) strips. Sub-cut the strips into seventeen 6 ½" squares.

Fabric B 5375-0127 5368-0177 5366-0130 5377-0144 1 yard
 Cut three 6 ½" x WOF strips. Sub-cut the strips into seventeen 6 ½" squares.
 Cut five 2 ½" x WOF strips for the binding.

Fabric C 5374-0127 5369-0177 5365-0130 5378-0144 2/3 yard
 Cut three 6 ½" x WOF strips. Sub-cut the strips into sixteen 6 ½" squares.

Fabric D 9669-9669 0733-Marshmallow - All remaining Color Ways 1 yard
 Cut two 6 ½" x WOF strips. Sub-cut the strips into forty 1 ½" x 6 ½" strips.
 Cut two 1 ½" x WOF strips. Sub-cut the strips into two 1 ½" x 8 ½" strips and two 1 ½" x 22 ½" strips.
 Cut one 1 ½" x 36 ½" strip.
 Cut two 1 ½" x WOF strips. Sew the strips together, end to end, and cut two 1 ½"x 50 ½" strip.
 Cut two 1 ½" x WOF strips. Sew the strips together, end to end, and cut two 1 ½"x 57 ½" strip.
 Cut two 1 ½" x WOF strips. Sew the strips together, end to end, and cut two 1 ½"x 51 ½" strip.
 Cut one 1 ½" x 37 ½" strip.

Fabric A Group 5 Group 6 Group 7 Group 8 2/3 yard
 5370-0199 5376-0118 5364-0155 5370-0163
 Cut three 6 ½" x width of fabric (WOF) strips. Sub-cut the strips into seventeen 6 ½" squares.

Fabric B 5372-0199 5377-0118 5366-0155 5372-0163 1 yard
 Cut three 6 ½" x WOF strips. Sub-cut the strips into seventeen 6 ½" squares.
 Cut five 2 ½" x WOF strips for the binding.

Fabric C 5371-0199 5378-0118 5365-0155 5371-0163 2/3 yard
 Cut three 6 ½" x WOF strips. Sub-cut the strips into sixteen 6 ½" squares.

Fabric D 0733-Marshmallow - All remaining Color Ways 1 yard
 Cut two 6 ½" x WOF strips. Sub-cut the strips into forty 1 ½" x 6 ½" strips.
 Cut two 1 ½" x WOF strips. Sub-cut the strips into two 1 ½" x 8 ½" strips and two 1 ½' x 22 ½" strips.
 Cut one 1 ½" x 36 ½" strip.
 Cut two 1 ½" x WOF strips. Sew the strips together, end to end, and cut two 1 ½"x 50 ½" strip.
 Cut two 1 ½" x WOF strips. Sew the strips together, end to end, and cut two 1 ½"x 57 ½" strip.
 Cut two 1 ½" x WOF strips. Sew the strips together, end to end, and cut two 1 ½"x 51 ½" strip.
 Cut one 1 ½" x 37 ½" strip.

Backing 0733 Marshmallow – All Color Ways 2 ¾ yards
 Cut one 48" x 58" for the back.

Quilt Assembly *(refer to the quilt layout while assembling the quilt top)*

1. Follow Figure 1, using the Fabric A, Fabric B and Fabric C $6\frac{1}{2}$ " squares and the $1\frac{1}{2}$ " Fabric D strips to make the block rows. Sew the rows together to make the quilt top.
2. Trim the quilt top as shown in Figure 2 to measure $39\frac{1}{2}$ " x $49\frac{1}{2}$ ".
3. Layer and quilt as desired.
4. Sew the five $2\frac{1}{2}$ " x WOF Fabric D strips together, end to end with 45° seams, to make the binding. Fold this long strip in half, lengthwise with wrong sides together, and press.
5. Bind as desired.

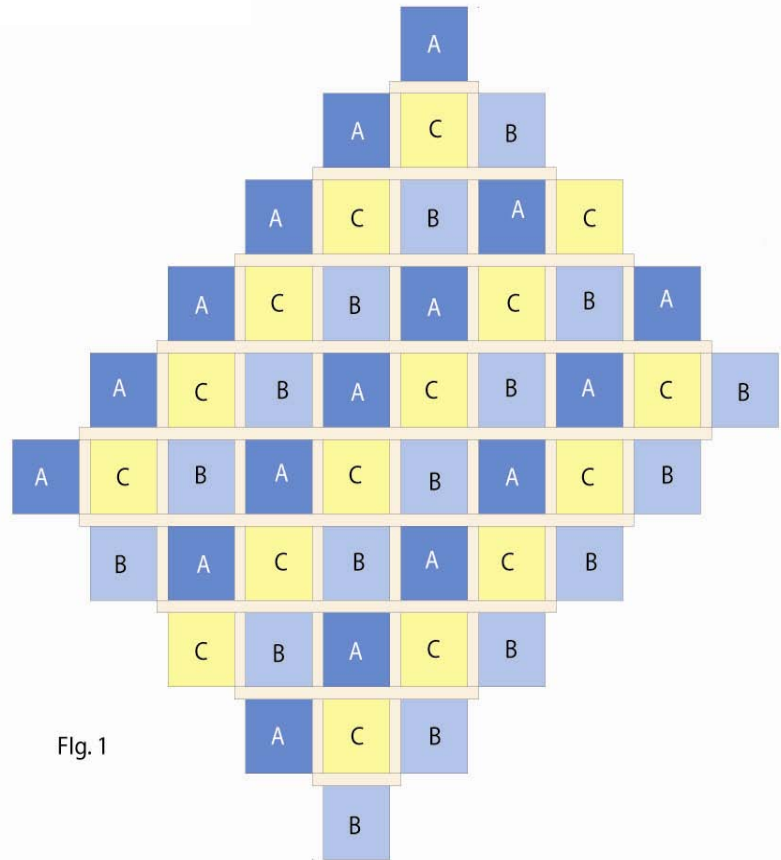


Fig. 1

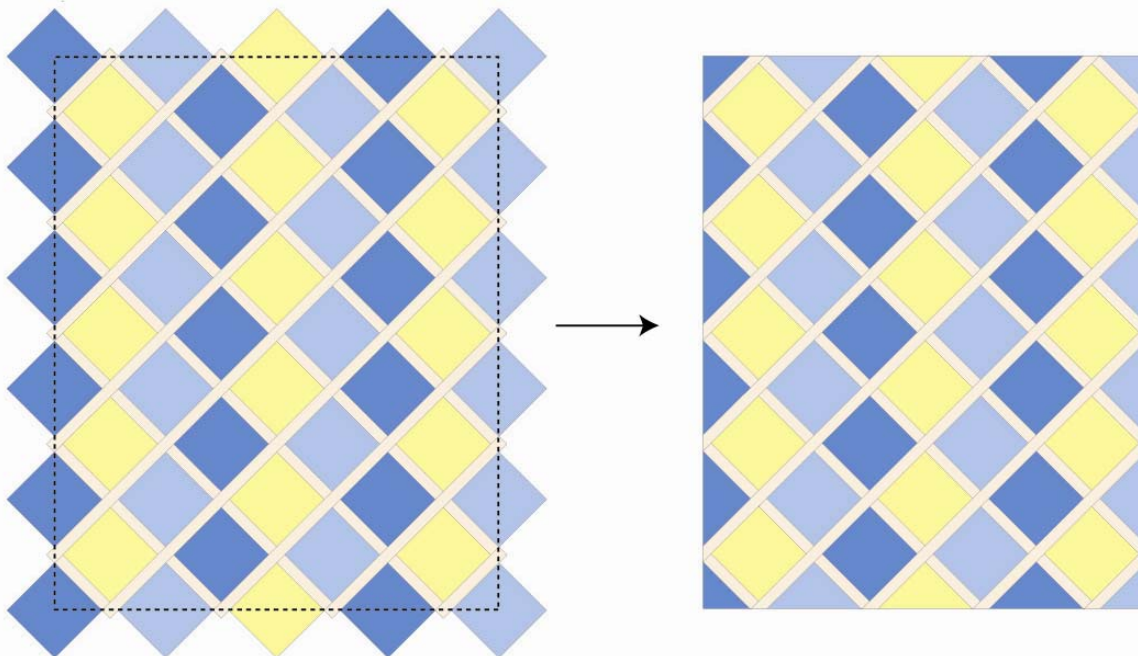


Fig. 2