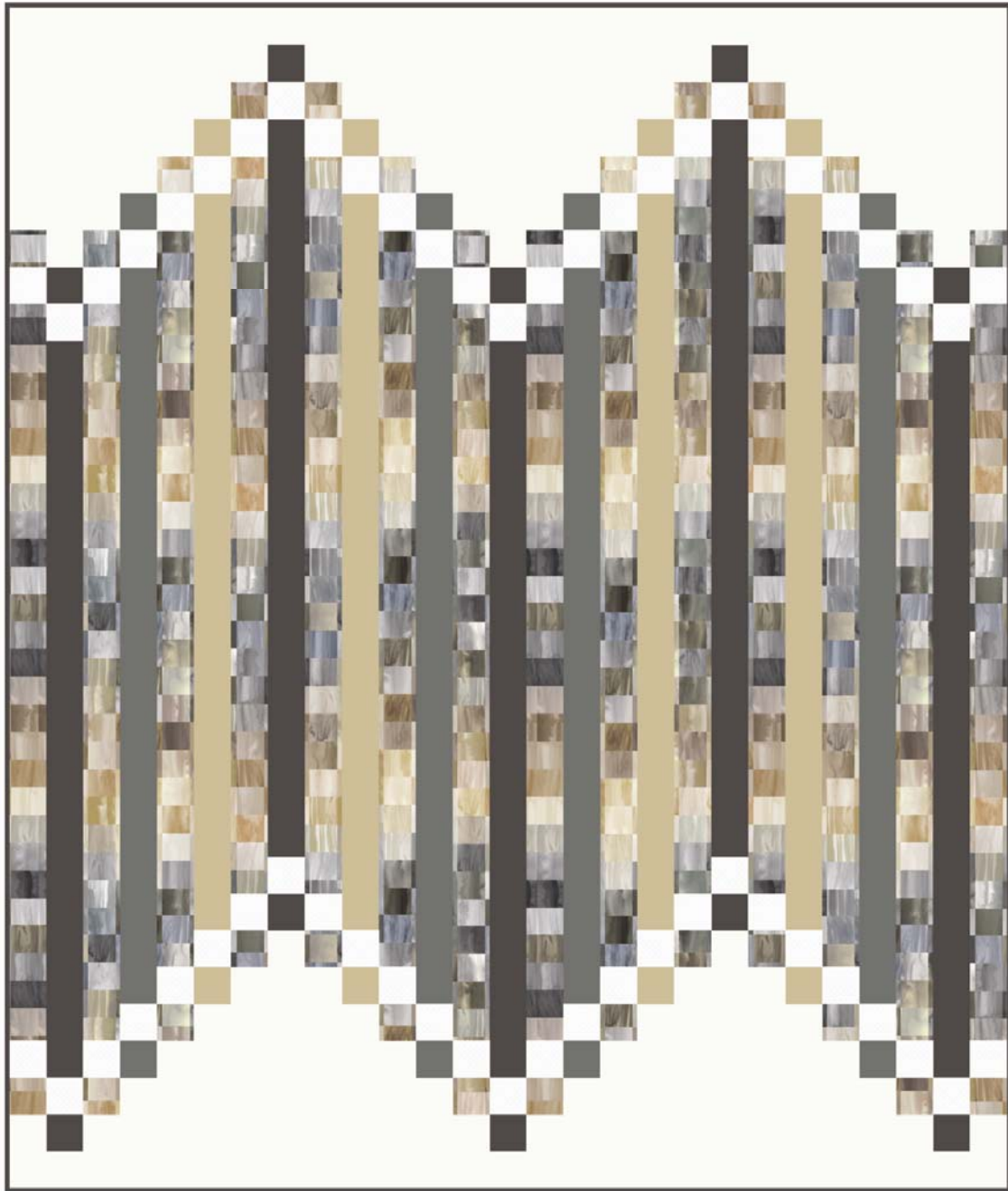


Color Mood

Fabric by Laura Berringer

"Contempo — Neutral" Quilt



54 1/2" x 64 1/2"



9812-0141 ~ 1-1/4 yards

5901-0733 ~ 1-1/4 yards

5901-0504 ~ 1 yard

5901-2680 ~ 1/2 yard

5901-1499 ~ 1/2 yard

Suggested Backing:
3-1/2 yards

FABRIC REQUIREMENTS AND CUTTING GUIDE:

Finished Size: 54 1/2" x 64 1/2"

From the Rainbow – 1 1/4 yards (9812-0141)

Cut 14 strips, 2 1/2" x 40 1/2"

Cut 28 squares, 2 1/2" x 2 1/2"

From the solid Marshmallow – 1 1/4 yards (0733)

Cut 16 strips, 2 1/2" x width of fabric; from these strips, sub-cut 5 rectangles, 2 1/2" x 14 1/2"; 10 rectangles, 2 1/2" x 12 1/2"; 8 rectangles, 2 1/2" x 10 1/2"; 8 rectangles, 2 1/2" x 8 1/2"; 8 rectangles, 2 1/2" x 6 1/2"; 10 rectangles, 2 1/2" x 4 1/2"; and, 59 squares, 2 1/2" x 2 1/2"

From the solid Charcoal – 1 yard (0504)

Cut 5 strips, 2 1/2" x 40 1/2"

Cut 10 squares, 2 1/2" x 2 1/2"

Cut 7 strips, 2 1/4" x width of fabric; stitch these strips together end-to-end for binding; press seams open

From the solid Grey Day – 1/2 yard (2680)

Cut 4 strips, 2 1/2" x 40 1/2"

Cut 8 squares, 2 1/2" x 2 1/2"

From the solid Putty – 1/2 yard (1499)

Cut 4 strips, 2 1/2" x 40 1/2"

Cut 8 squares, 2 1/2" x 2 1/2"

(All seams are sewn right sides together with a 1/4" seam allowance unless otherwise specified.)

Making the Vertical Strips

1. Stitch a 2 1/2" Marshmallow square to each end of a 2 1/2" x 40 1/2" Rainbow strip, pressing to the Rainbow. Stitch a 2 1/2" Rainbow square to each end of the strip. Stitch a 2 1/2" x 12 1/2" solid Marshmallow rectangle to one end, followed by a 2 1/2" x 4 1/2" solid Marshmallow rectangle on the opposite as shown. Make 10.



2. Repeat step 1 stitching a 2 1/2" x 8 1/2" Marshmallow rectangle to each end. Make 4.



continued

3. Stitch a 2 ½" Marshmallow square to each end of a 2 ½" x 40 ½" solid Charcoal strip. Stitch a 2 ½" solid Charcoal square to each end. Stitch a 2 ½" x 14 ½" Marshmallow rectangle to one end, followed by a 2 ½" x 2 ½" Marshmallow square to the opposite end. Make 5.



4. Repeat step 3 with a 2 ½" x 40 ½" solid Grey Day rectangle, 2 of the 2 ½" Marshmallow squares, 2 of the 2 ½" solid Grey Day squares, and a 2 ½" x 10 ½" and 2 ½" x 6 ½" Marshmallow rectangle. Make 4.

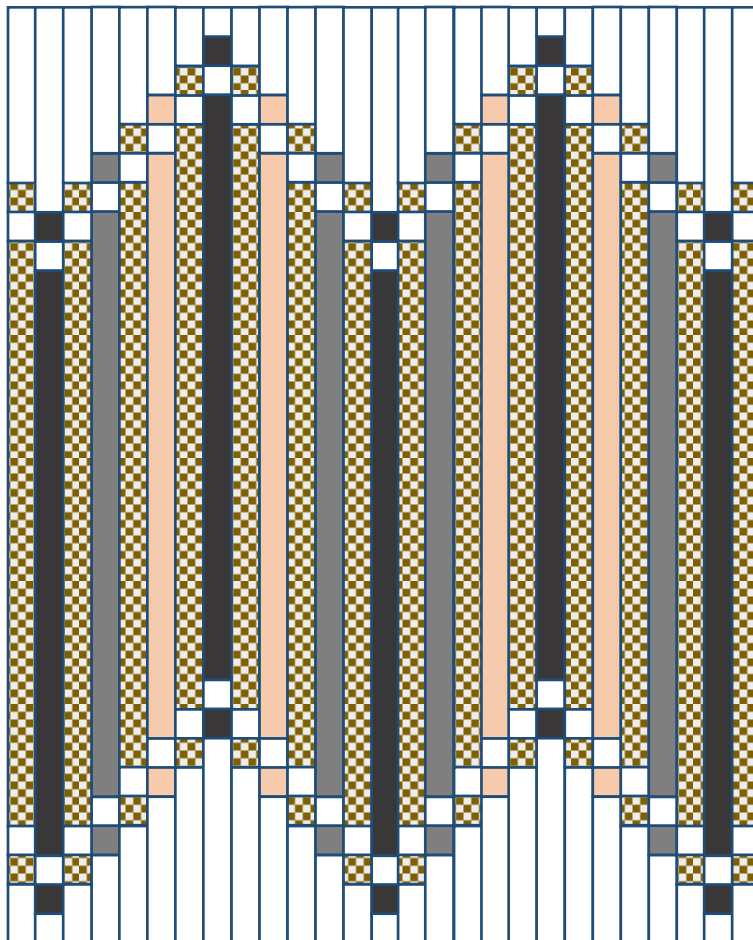


5. Repeat step 4 with a 2 ½" x 40 ½" solid Putty strip, 2 of the 2 ½" Marshmallow squares, 2 of the 2 ½" solid Putty squares, and a 2 ½" x 10 ½" and 2 ½" x 6 ½" Marshmallow rectangle. Make 4



Assembly & Finishing:

6. Stitch the vertical strip units together as shown, noting the orientation of each strip. Press towards the Rainbow strip units.



7. Quilt as desired and bind with the solid Charcoal binding strip.